

versatile housing solutions designed for your environment



## economical

- ehabitat's pre-fab system allows quick construction, reducing on site labour costs by up to 50%. The modular system utilizes low cost, 'off the shelf' materials which can be used with no cutting. This means all internal and external cladding (including glass) just 'plugs' straight into the frame.
- The system is space efficient and there are many clever built in storage and space saving options.

## energy efficient

- The entire system was conceived with passive solar principles in mind. This makes every ehabitat extremely cheap to run and good for the environment.
- They are Designed with inbuilt flexibility to work equally as well in tropical environs as in temperate regions of australia with minor modifications. We use low embodied energy and non 'off gassing' materials throughout.

## evolving

- ehabitat's simple cross section and modular nature allows you to add, adapt or transform your habitat to a changing budget, family or lifestyle.

## expressive

- The simple design components allow limitless individual configurations, enabling you to shape and sculpt a plan to suit your way of life. The aesthetic is modern without being stark and many have remarked upon its elegant Japanese look.

## ergonomic

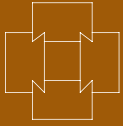
- ehabitats include exciting storage features, climatic control devices and built-in furniture options which make your habitat a pleasure to live in.

## ehabitat profile

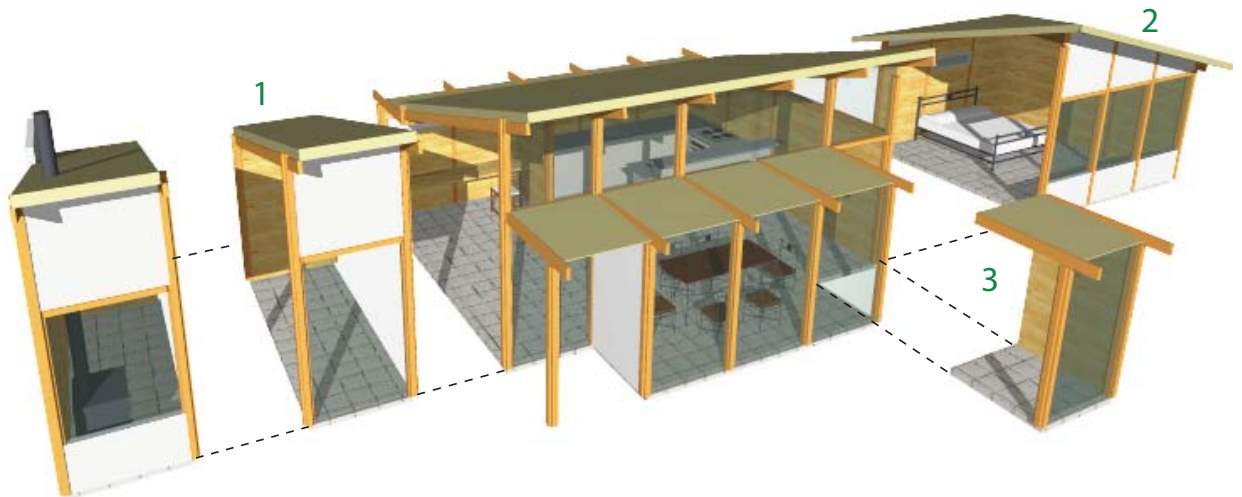
- ehabitat was the outcome of a two year collaboration between an industrial designer and an graduate architect. The brief was to design a truly modular, environmentally friendly and low cost housing solution. It was conceived on pristine Flinders Island and tested in the harsh Roaring Forties environment.
- ehabitat was officially released by Giles Newstead in November 2005 following extensive research and the completion of two prototypes. These first two ehabitats are now being lived in and enjoyed by satisfied ehabitat customers.
- ehabitat has developed a functional, practical approach that marries modern production techniques with individual environmental design.

The directors take pride in being hands on individuals and all building clients have access to them seven days a week.

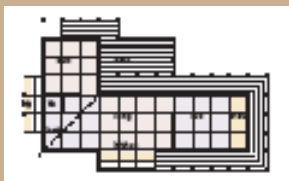




versatile housing solutions designed for your environment



These 3 floor plans all use the same number of ehabitat components and have roughly the same floor area, but show just how adaptable the construction system is to achieving many different building forms and layouts!



## Modular Flexibility

### 1 - base module 4.9m<sup>2</sup>

This forms the basic cross section for the construction system. It consists of a 3 bay clear span. To build a room, simply stack them up until you have the desired size. Walls may be glazed, solid or openable. A 5 bay module for larger living or meeting areas is also available.

### 2 - corner module 14.8m<sup>2</sup>

Used to take a floor plan around a 90° turn or as a separate guest/studio room, this module forms a crucial part of the system. Its hip roof profile makes it great for re-directing prevailing winds over your ehabitat. This size is perfect for a generous bedroom.

### 3 - push out module 1.6m<sup>2</sup>

This module can be 'plugged on' to any external wall of an ehabitat. Use singular modules for storage or combine 3 to make a very efficient bathroom. You can also use a push out module to extend your living area or utilize them for a kitchen or day bed alcove. They are often used unenclosed as a shading verandah to the north.

## visit

[www.fourwallsandaroo.com.au/ecofriendly-homes.html](http://www.fourwallsandaroo.com.au/ecofriendly-homes.html)  
for further information on sustainable housing.